



The Environment and Gender Index (EGI)

Lorena Aguilar
Global Senior Gender Adviser

Environment & Gender Index

- The first monitoring and accountability mechanism of its kind, the EGI brings together gender and environment variables
- Pilot phase scored and ranked 73 countries along 27 dimensions in six categories

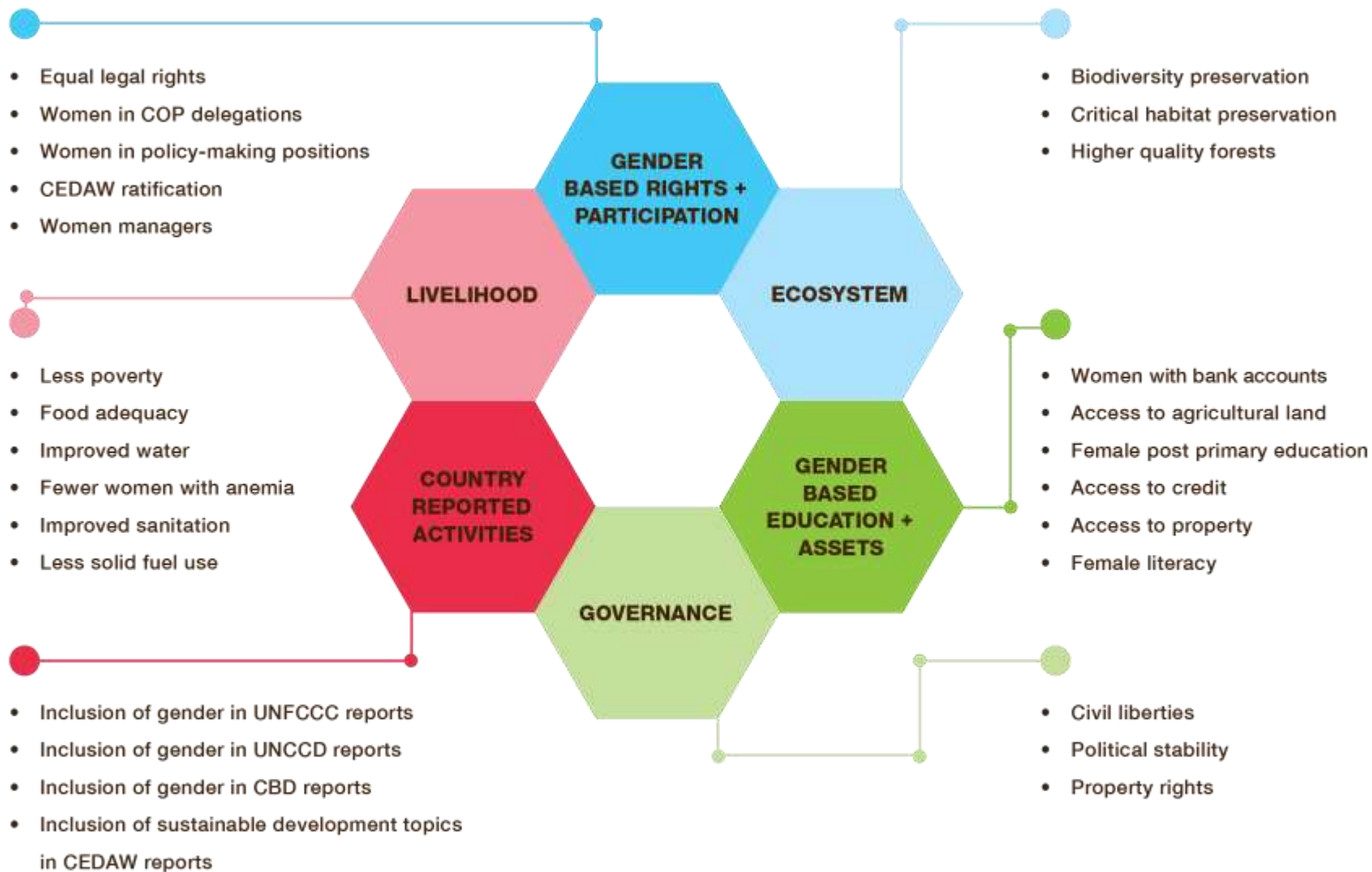


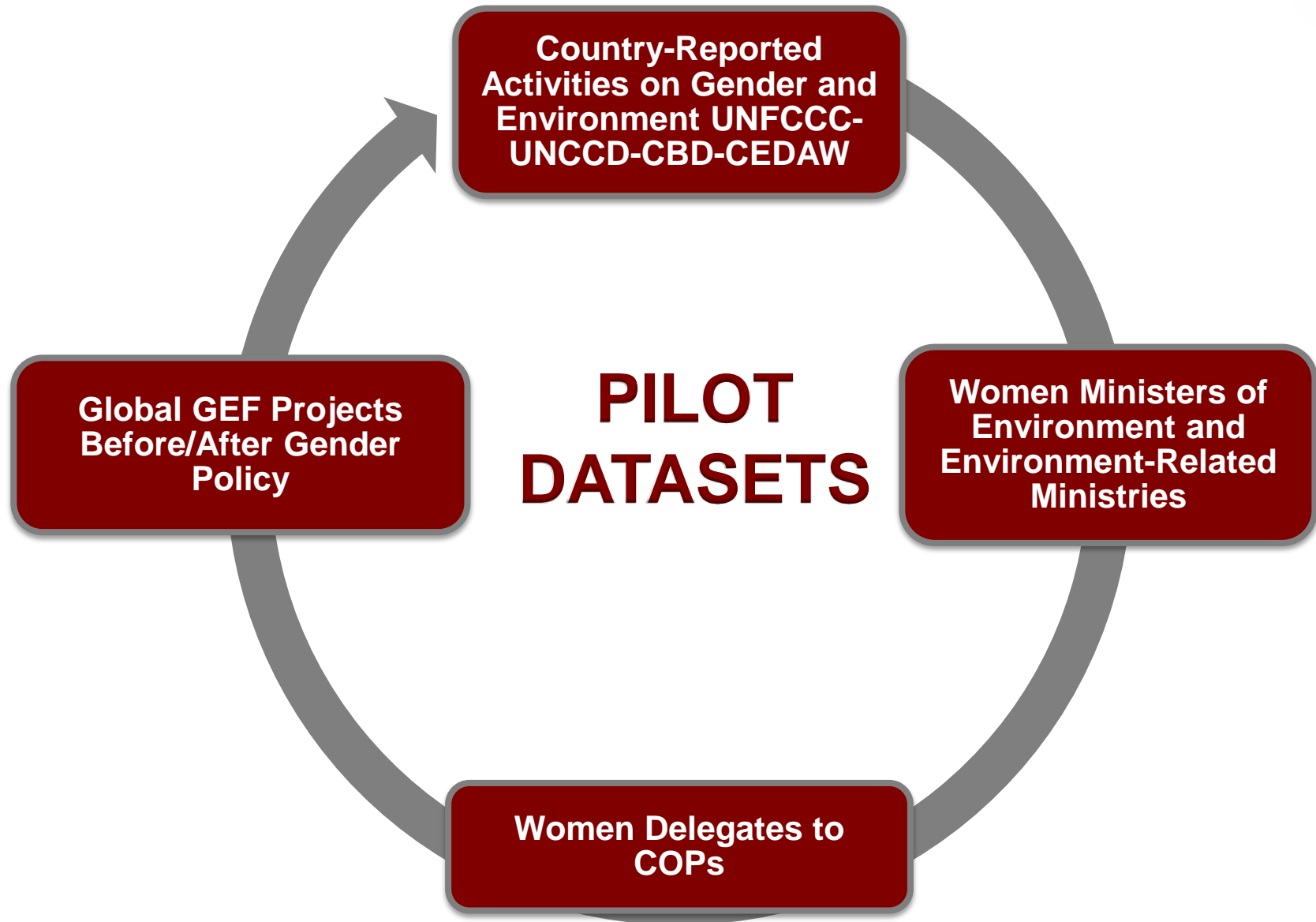


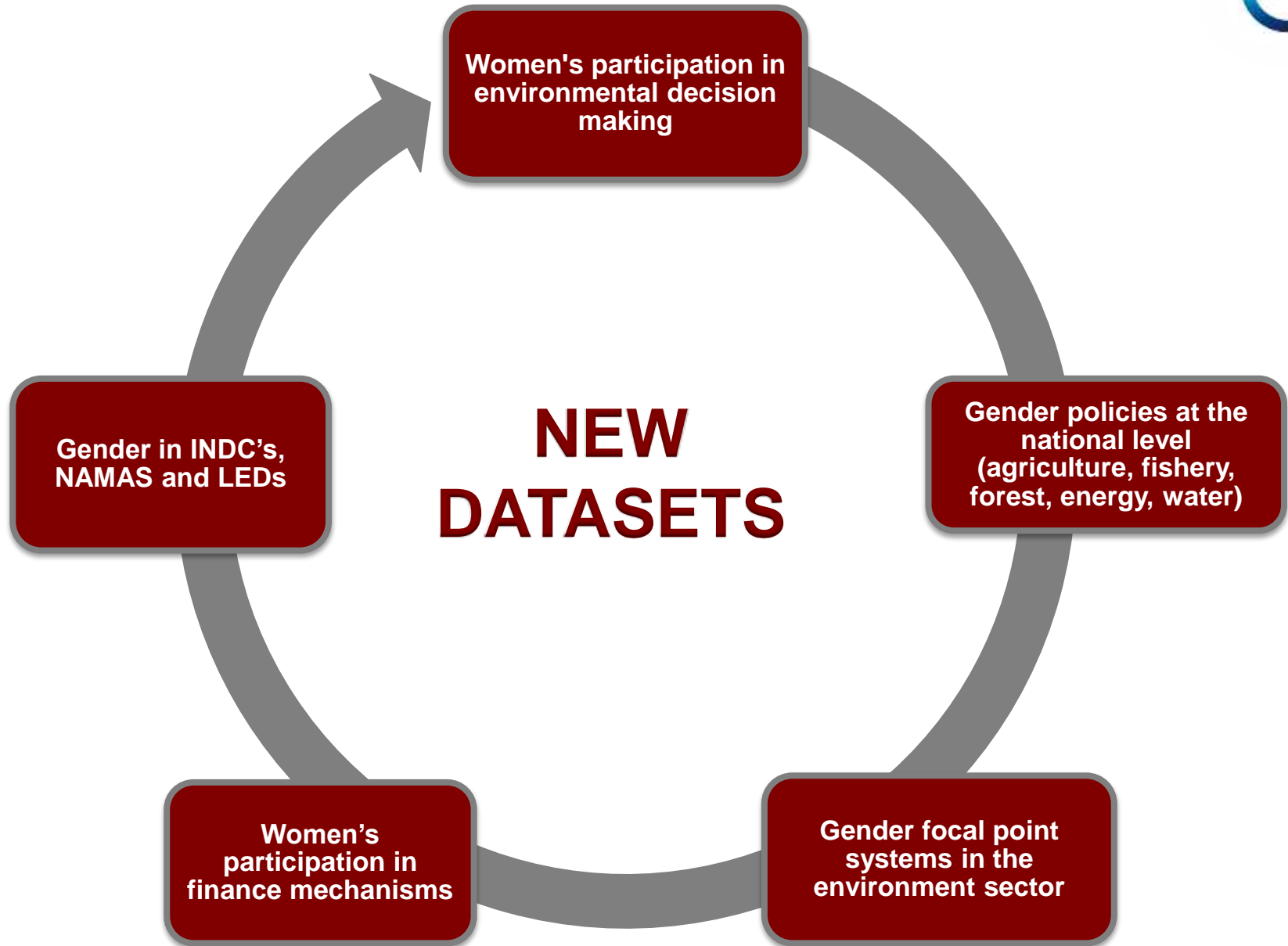
Methodology

- Development of a composite index
 - Country selection
 - Index-ready data
 - Weighting scheme
- Overall score based on weighted averages of the 6 categories from 0-100 scale
- Pre-audit by European Commission's Joint Research Center

The EGI Framework





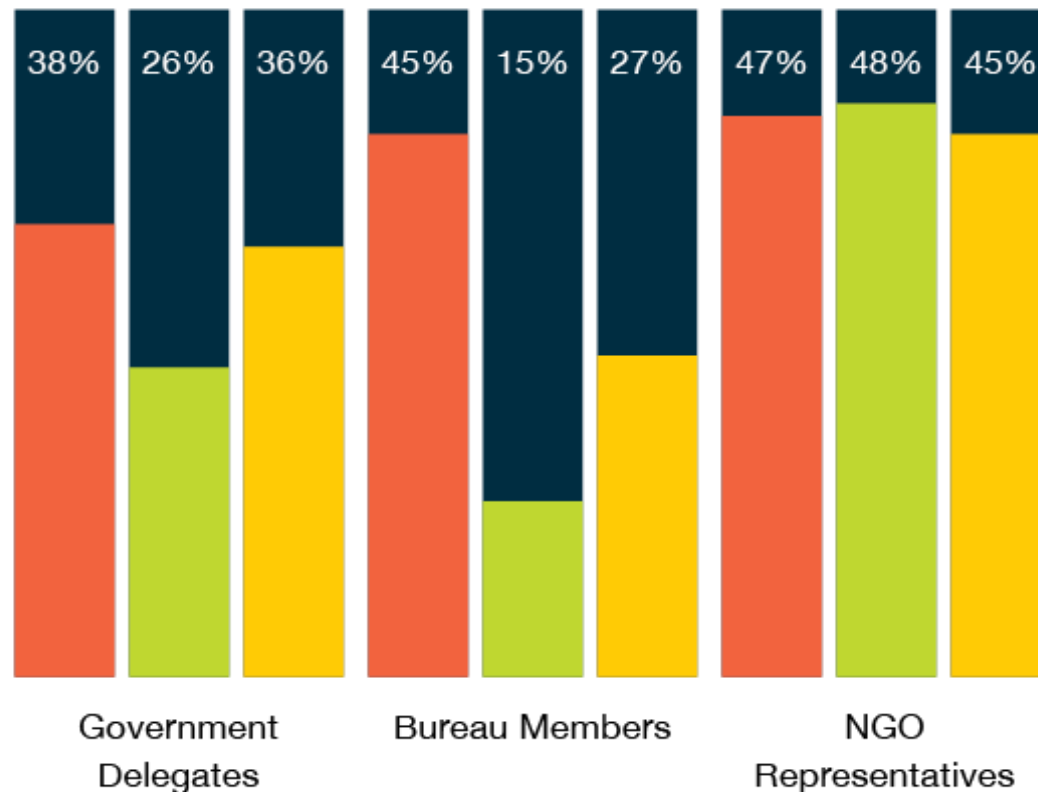


Women's Participation in Environmental Decision-Making



- Deepen understanding of a broad finding from the 2013 pilot phase of the EGI—that women have less access to environmental decision-making spheres at all levels
- In 6 out of the 9 decision-making processes analyzed, women represent less than one-third of decision makers
- Covered all the countries in the world

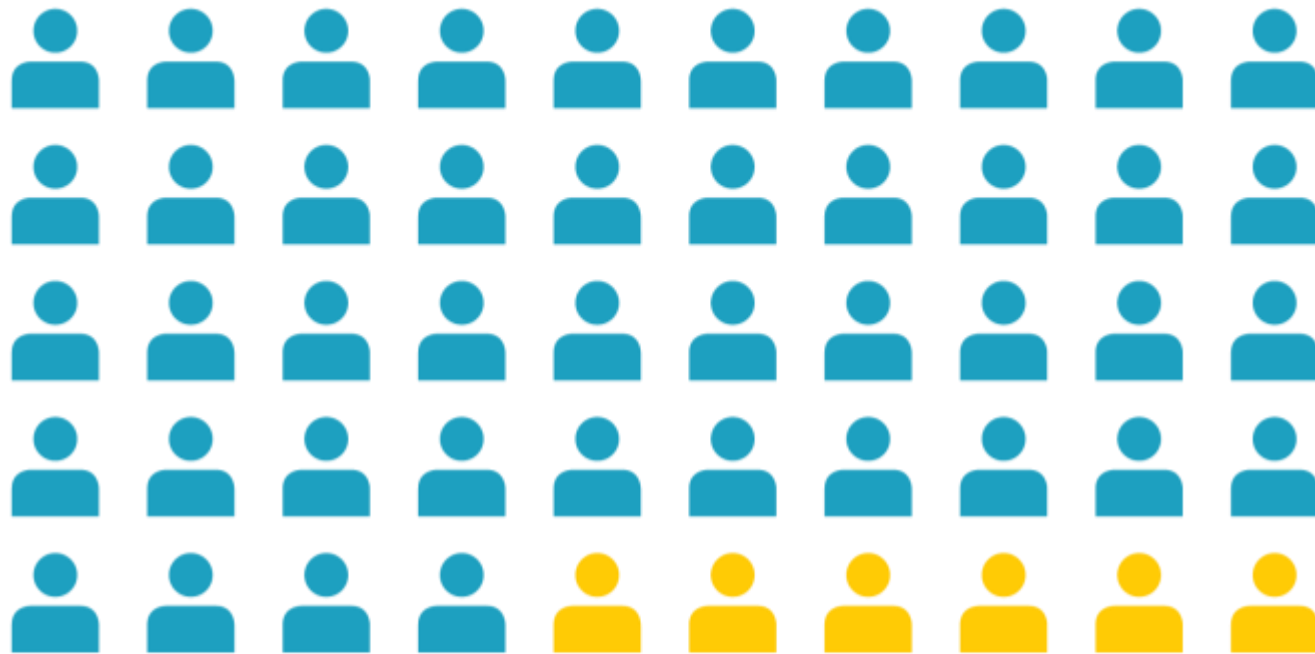
Women's Participation in The Rio Conventions



- CBD COP12 (2014)
- UNCCD COP11 (2013)
- UNFCCC COP20 (2014)

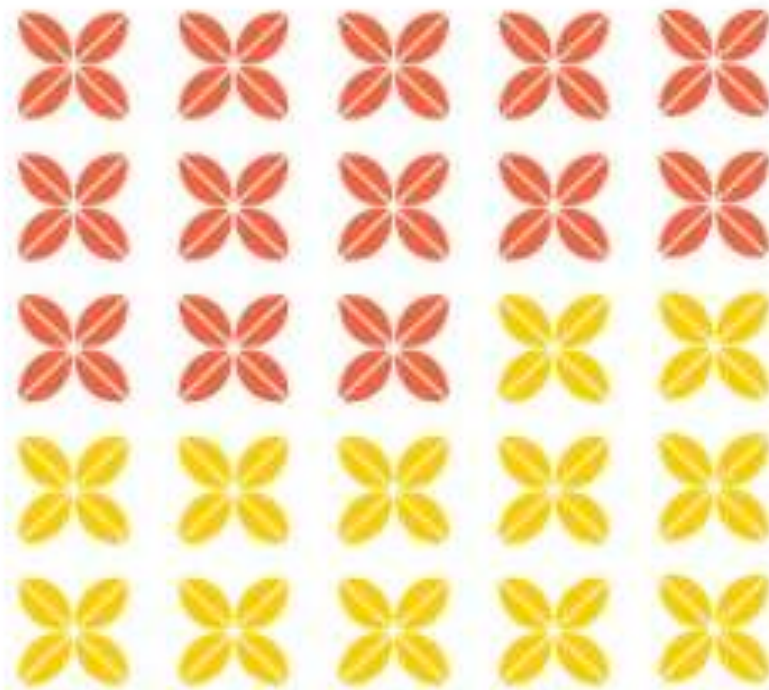
% of Women

Heads of National Environmental-Sector Ministries



 Women 12%
 Men 88%

Nationally Elected Green Party Leaders



 Women 48%
 Men 52%

- In nineteen countries, women's roles in leadership positions within the Green Party provide the opportunity for women to influence policy frameworks and be at the forefront of bringing environmental issues—a Green Party priority—to national political agendas

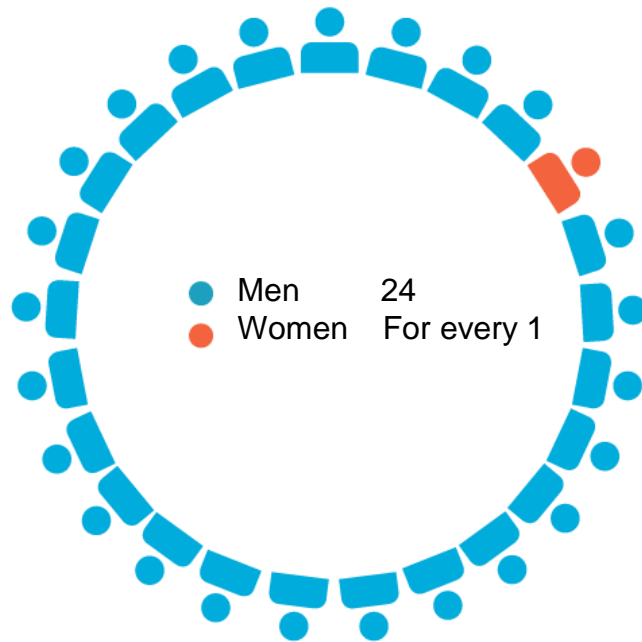
Energy Sector

- 10.6% of Ministers in energy-sector ministries are women (Ministries of Energy, Transportation, Public Works, Utilities, Petroleum/Oil/Hydrocarbons, and Mines, depending on the nation and the responsibilities of each ministry)
- This is 2015 data from the 193 UN Member States, including 245 total ministries

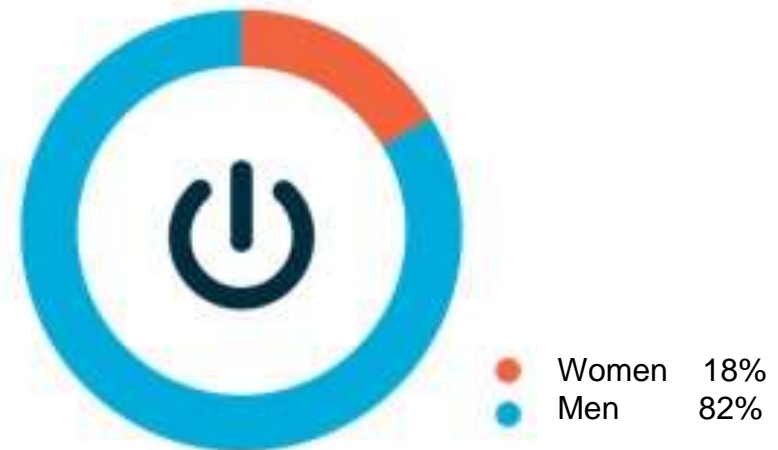


World Energy Council (WEC) Leadership

WORLD ENERGY COUNCIL CHAIRS



WORLD ENERGY COUNCIL SECRETARIES





Forest Sector



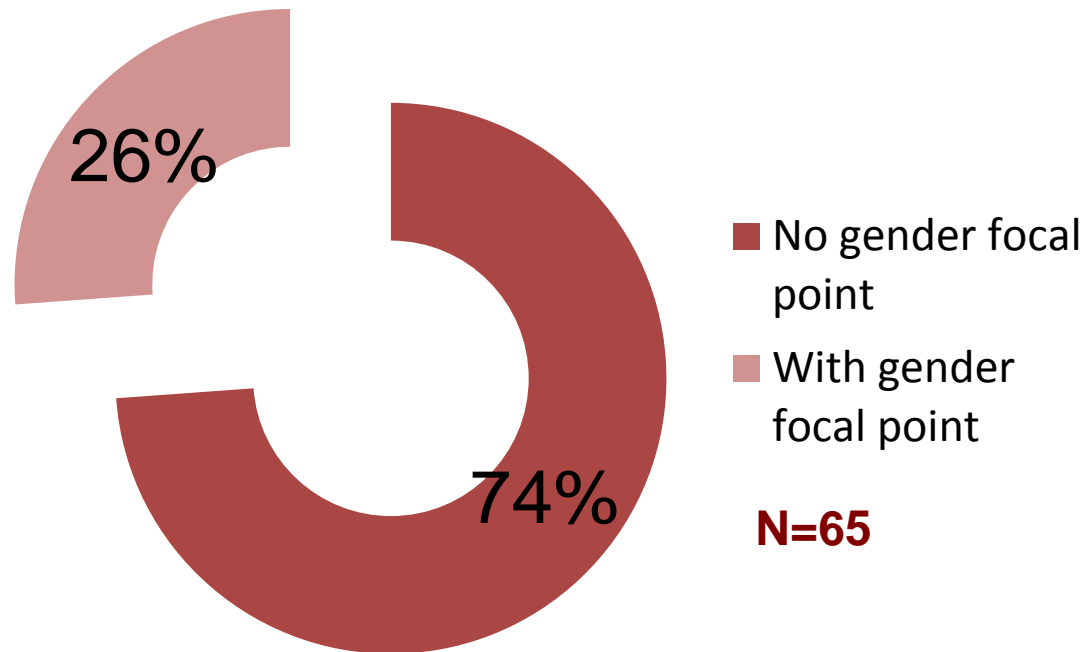
- 1.2 billion people depend on agro-forestry farming and forest resources
- At least 50% of these are women
- The views and realities of these 600 million women should be reflected and represented throughout every aspect of the forest sector

Focal Points to the UN Forum on Forests (UNFF)

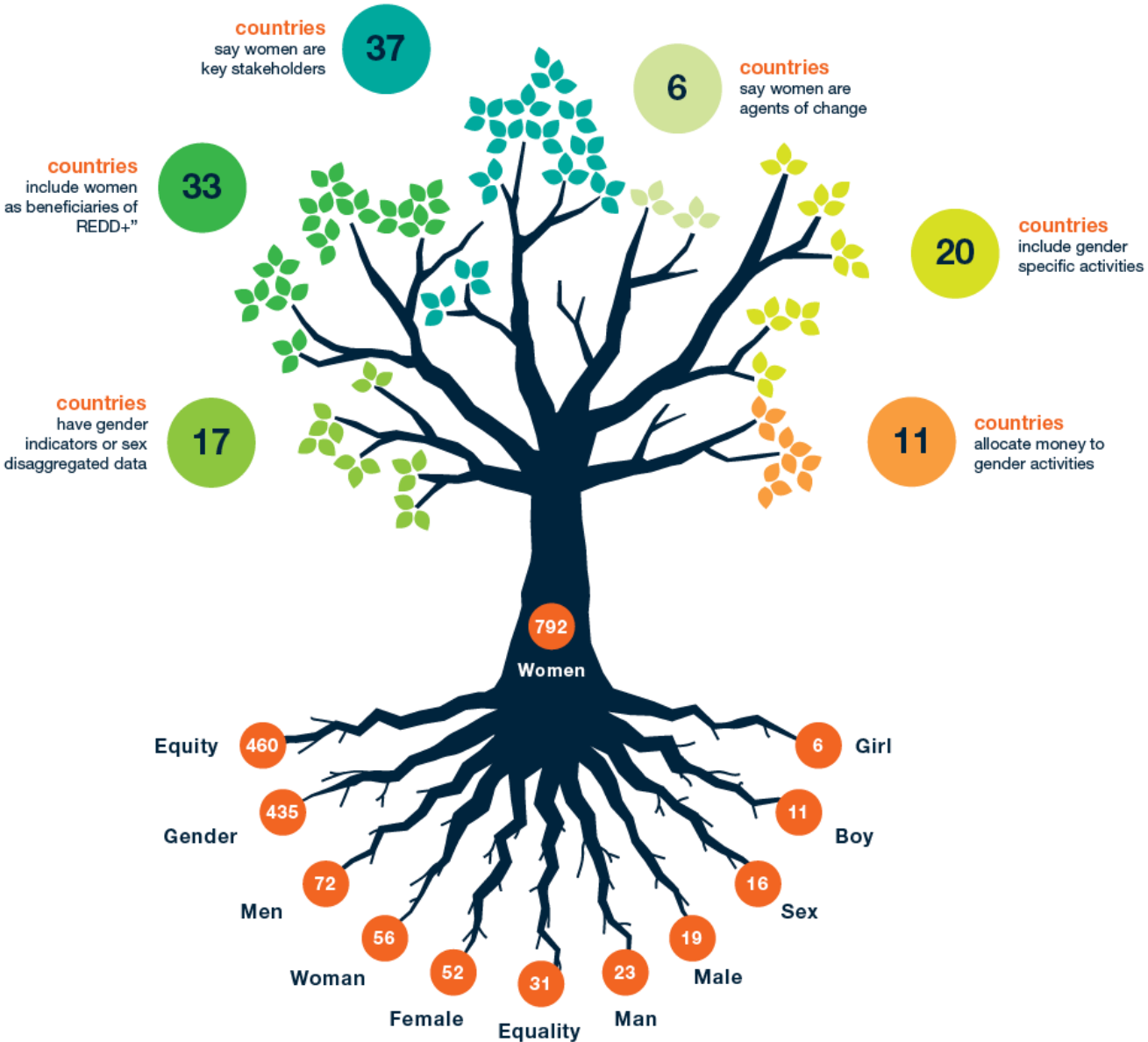


 Women 24%
 Men 76%

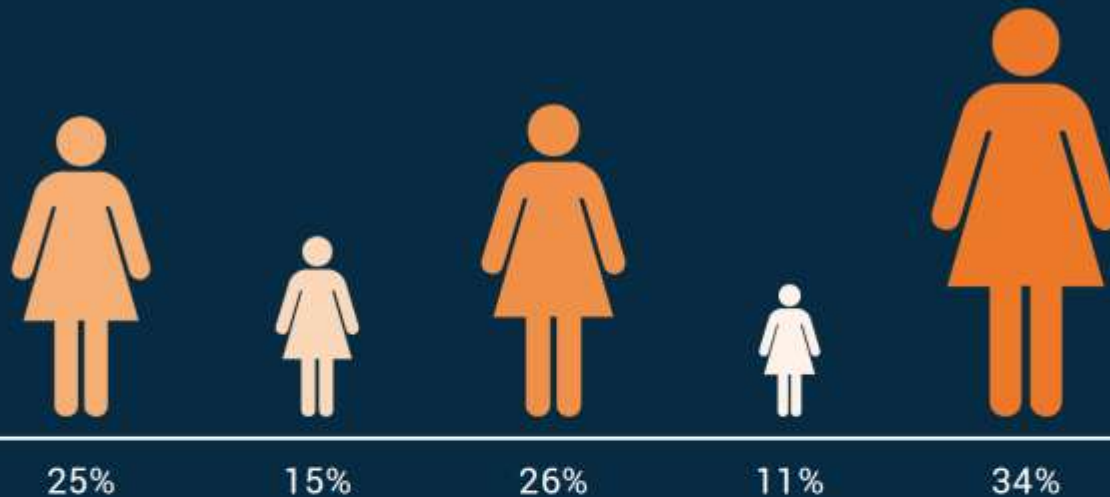
Gender Focal Points in National Forestry Institutions



REDD+ in 45 Countries



Participation of Women on Climate Finance Mechanism Boards



- Global Environment Facility
- Green Climate Fund
- Climate Investment Fund
- Climate Development Mechanism
- Adaptation Fund

National Focal Points of the Global Environment Facility (GEF)



Although the GEF adopted a policy to ensure equitable participation of women in GEF projects, women represent less than 1/3 of the 304 national focal points.

Gender Focal Points and Policies in Environmental Ministries

- In collaboration with UN Women dataset assessing how gender considerations are being included in environmental sector ministries

Topic 1 Gender focal points in environmental ministries

Topic 2 Gender policies and programmes in environmental ministries

Topic 3 Environmental linkages in/with national women's mechanisms



Topic 1: Gender Focal Points in Environmental Ministries

- **35%** of all environmental sector ministries **have a gender focal point**
- **Ministries of agriculture** are the most common ministry to have a gender focal point (**57%**)
- **Ministries of water** are the least common ministry to have a gender focal point (**22%**)



Topic 2: Gender Policies and Programmes in Environmental Ministries

- 25% of ministries formal gender policy
- 38% of ministries include gender considerations in their policies or programmes
- Most common ministries to have gender policy are **agriculture** and **environment** (42%); the least common are **energy** and **fisheries** (12%)





Topic 3: Environmental Linkages with Women's Mechanisms

- **63%** of countries perform cross-ministerial work between the women's mechanism and environmental ministries
- Women's affairs mechanisms most commonly work with **ministries of agriculture**
- **32%** of countries have an environmental focal point within the women's mechanism

Gender in INDCs

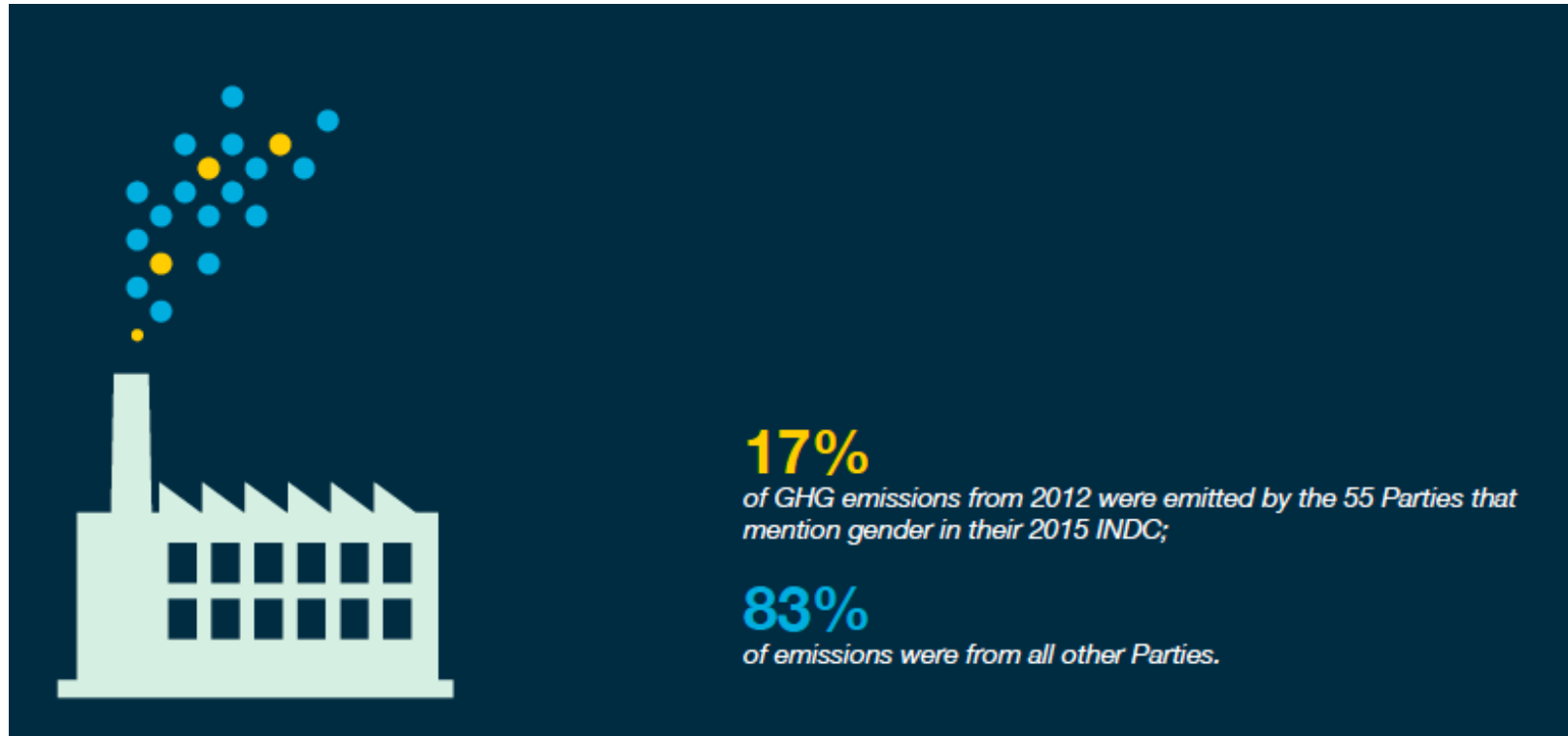
N=140 INDCs from 167 Parties, November 18, 2015



39%

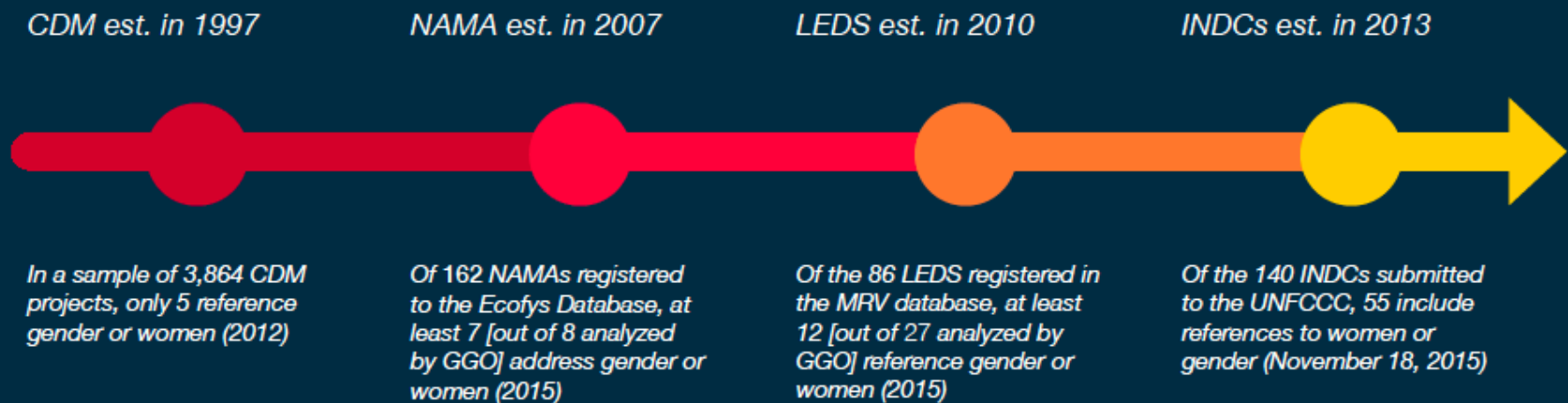
Of the INDCs submitted as of 11/18/15, 39% explicitly mention "gender" and / or "women" in the context of their national priorities and ambitions for reducing emissions.

Gender in INDCs



*As per the 2012 baseline from WRI's CAIT Climate Data Explorer Tool.

Gender in NAMAs & LEDS



Progressive trend of mentions of “women” and “gender” in mitigation activities.

Future of the EGI

- Next full phase in 2016
- New categories and datasets are currently being collected to expand the EGI framework
- The EGI is becoming global, including all 193 UN Member States
- An accountability mechanisms for the SDGs





THANK YOU

Lorena Aguilar
Global Senior Gender Advisor
lorena.aguilar@iucn.org